

# Qing Ming



April 5, 2023



Tucson Chinese Cultural Center  
1288 West River Road  
Tucson, AZ 85704  
520-292-6900  
[www.TucsonChinese.org](http://www.TucsonChinese.org)



Evergreen Mortuary respectfully supports Chinese Qing Ming.

3015 North Oracle Road

Tucson, AZ 85705

(520) 257-4831

[www.evergreenmortuary-cemetery.com](http://www.evergreenmortuary-cemetery.com)



**Tucson Chinese Cultural Center**  
**respectfully presents...**

**Qing Ming Festival (Tomb Sweeping Day)**

Wednesday, April 5

Qing Ming (pronounced Ching Ming) is also known as the Remembrance of Ancestors Day and Tomb-Sweeping Day.

On Qing Ming, families visit the graves of departed loved one. They might clean the headstone, weed the area around the grave, replace wilted or dead flowers and light incense. Many families burn paper money or paper versions of valuable ancestors treasured while on earth – a sports car, designer handbag, iPhone, television - so they can enjoy those things in the afterlife.

During the day, food is displayed near the headstone as an offering to the spirits. Some families have a picnic there. At night, families might set off fireworks to scare away evil spirits and to make sure their ancestors know they are there.

Qing Ming traces its history back more than 2500 years the time of Duke Wen, who held a memorial under a willow tree to mourn his loyal servant, Jie Zitui, and declared a period of three days without fire, meaning only cold food could be eaten.

In modern day Qing Ming, many families still eat cold food and use willow branches to ward off evil spirits. Many share outdoor activities such as picnics. However people recognize the tradition, time spent with family is crucial.

To honor and reflect on our community's departed loved ones, the Tucson Chinese Cultural Center has created a digital tribute section on our website, [tucsonchinese.org](http://tucsonchinese.org), that will be updated each year as part of Qing Ming.

Please submit photos and information about departed friends, loved ones or family members who were part of the Tucson Chinese community: a member of TCCC, a volunteer of TCCC, a donor of TCCC at [info@tucsonchinese.org](mailto:info@tucsonchinese.org)





# Qing Ming Festival

---

---

In the traditional Chinese lunar calendar (equivalent to April 5th of the Gregorian calendar), Qing Ming was originally used as a solar term concerning agricultural affairs. The famous “Almanac Binder” states that “after fifteen days of the Vernal Equinox, when air is clear, everything becomes clear, so comes Qing Ming.” Literally, Qing Ming means “transparent and clear”. It tells people that spring has come, it’s time to start tilling.

In the month of March before the Qing Ming Festival, there were originally two other festivals for worshipping ancestors: the Shang Festival and the Cold Food Festival. In these festivals, people believed that when winter gave a way to spring, using spring water to wash off the winter pollution could bring new life. In these festivals, people lit new candles on the cemetery of their ancestors, sweep away the dirt and worship their ancestors; they pray for their ancestors to bless their offspring with gratitude. Because the Cold Food Festival was held on the day before Qing Ming, these worshipping activities gradually became part of the Qing Ming Festival.

Since the Tang Dynasty, Qing Ming Festival has officially become an important custom for Chinese to worship ancestors. In the seven or eight days around the Qing Ming festival, usually accompanied by drizzling rain, every family must visit their ancestor’s mausoleum for weeding and earth-raising, putting on incense and providing favorite food for the ancestors, and telling their wishes to ancestors and praying for bless. At the end of worship, people hike in the surrounding mountains to be vigorized by the spring growth, and welcome a fresh start of better future. Qing Ming is an important festival for the Chinese world-wide to worship and thank their ancestors.

In the Qing Ming Festival this year, for keeping the traditions of Chinese community, Tucson Chinese Cultural Center specially reserved worshipping time at the Evergreen Cemetery in town. Evergreen cemetery is a local cemetery where many famous people in the history of Tucson are resting in peace.

Please bring our sincere respect to your ancestors.





清明

杜牧作

清明时节雨纷纷，  
路上行人欲断魂。  
借问酒家何处有？  
牧童遥指杏花村。

Qing Ming

by Du Mu

It drizzles endlessly during the rainy season in spring,  
Travelers along the road look gloomy and miserable.  
When I ask a shepherd boy where I can find a tavern,  
He points at a distant hamlet nestling amidst apricot blossoms.

---

---

## What is Qing Ming

Today, we honor our friends and families of our  
community who have passed away.



# We need your support

---

---

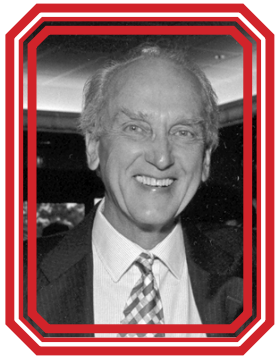
Inclusion on our tribute website is free. But to support this project and others that promote Chinese culture, we request a gift to the Tucson Chinese Cultural Center donation in honor of your loved one at Qing Ming.

Proceeds will benefit the TCCC Endowment.

Donations can be made on our  
website: [www.tucsonchinese.org](http://www.tucsonchinese.org)



1288 W.River Road  
Tucson, Arizona 85704  
[www.tucsonchinese.org](http://www.tucsonchinese.org)



Michael Belton



Bea Bolan



Sumiko Champeny



Bessie Chan



Frank Y.F. Chan



Tina T.L. Chan



Yue Youn Lau Chan



Anna Mae Chana



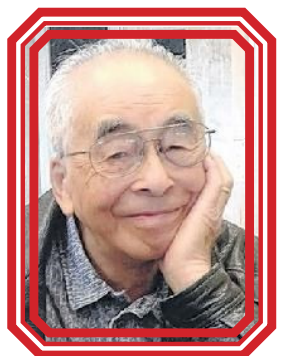
Chuan F Tony Chen



George Chen



Alice Gin Chin



Lincoln Chin



Ana Chu



Tze-Shar Chu



Pauline Chue



Stanley Yuen Woon Chue



Dorothy V. Don



Faye Ging Don



Florence Don



Franklin Don



Frederick J. (Freddy) Don



Harold Don



John Don



Tony Don





Phillip Wah Don Sr.



Tomiko Earle



Joung Eng



Wey Jun Hi Eng



Moon Chau (Raymond Eng) Eng



LiZhi Fang



SooHoo Meekin Mee Ong Fat



Fay Line Fong



Hazel Chuen Fong



Roberta Lee Fujitani



Wayne Fujitani



Henry Fung



Peter J. Fung



Shui Keung Fung



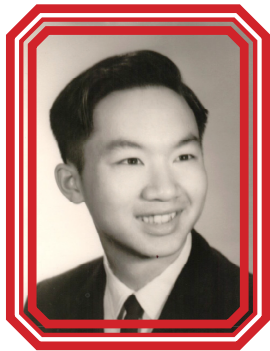
Dong Hing Gee



Dudley Gee



Fred Gee



George Gee



Hom Bo Gee



Jane Gee



Lei Jing (Lily) Gee



Linda Gee



Phillip (Nguey Gim) Gee



Verne Y.(Frank Gee) Gee



Suey L. Gee



Wing Yuen Gee



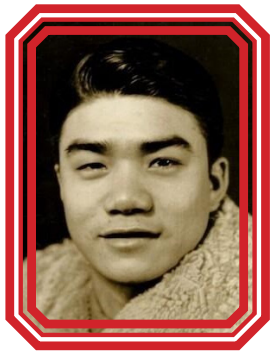
Chuck M. Gin



Hang Ching Jeanie, Gin



Harry Gin



John Gin



Juana Wong Gin



Justin Thomas Gin



Marion Wong Gin



Tommy M. Gin



Willie T. Gin



Jenny G. Ginn



Nathan P. Ginn



Show Ying Ginn



Mamie Lim Gong



On Yu Ho



Howard Hom



Rose F. Hom



Young See Hom



Constance Howard



Ben Ying Huie



Goldie Huie



Kenneth "Kenny" Hum



Marie Ihrig



Kui Juan Yu Jiang



David Jin



Gertrude Margaret Jingling



Mamie Kai



John Kai Sr.



Vincent C. Lam



Yen Lam



Alan Yuen Lee



Jean Lui Lee



Anna Lee



Bruce Michael Lee



Bruce Wayne Lee



Carmen Nides Lee



Chan Nuen Lee



Chom Wi Lee



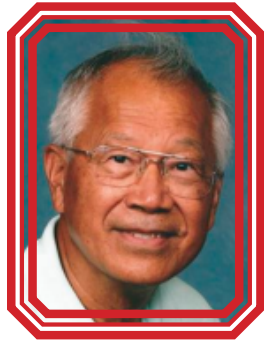
Delia Lee



Dorothy Lee



Gin Him (Gene) Lee



Harold Lee



Harry Yee



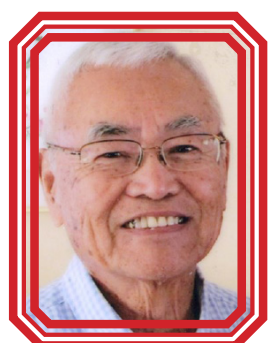
Helen Yee



Hom Ngan Oy Lee



Hop Lee



Howard Lee



King Yu Lee



Lillie Lee



Lorraine Lee



Luciano Lee



Mabel Hoi Lee



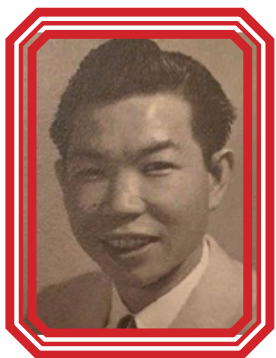
Raymond T. Lee



Taft Lee



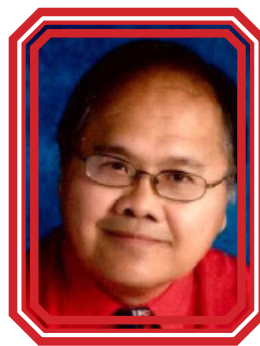
Tony S.B. Lee



Tun Lim Lee



Yuen Chee Lee



Thomas T. Leong



J. R. Leung



Augusta (Gussie) Y. Lew



Dr Edwin Joe Lew



Hanly Lew



Joe Wee Lew



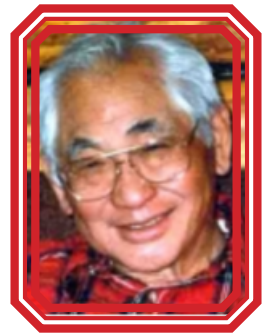
Sue Wah Lew



Robert C. Liang



Carol Lim



David P. Lim



Ding Soon "Jimmy" Lim



Gin Y. Lim



Harold Joseph "Pino" Lim



Mae Lim

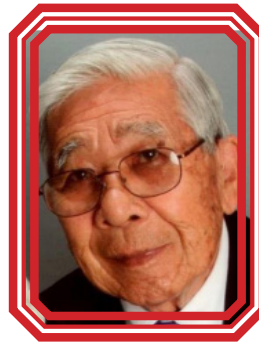




Benny Lim



Mrs. Lim



Raymond Lim



Stella Lim



Wally Lim



Wing Y. Lim



Steve Liou



Yuet Siu Louie



Henry Low



John Lee Low Sr.



ManSue Low



Nixon Low



Marilyn Mah



Benson Mar



Chung Ming Mar



Mary Ong Tom Mason



Andre Newman



Park Pang



Florence Quen



Jerver Woo Quen



Ray Quen



Sofia Pia Lee Reynolds



Mary Santin



Chun Chun Lee "Jenny" Tang



David W. Tang Sr.



Esther Don Tang



Foo Leung Tang



Pauline Tang



Phillip Tang



Dr. Shaow Hua Tham



Daniel Jean Jew Tom



Danny Tom



Soleng Tom



Terrence Deane Tom



Jane Lew Toy



Park Leung Toy



Huang Zee Wan



Betty Wong



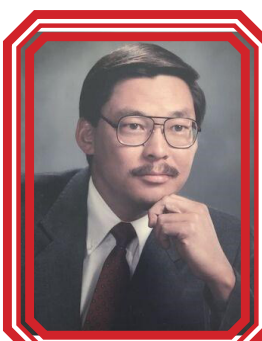
Bing K. Wong



David Wong



Doris Wong



Edward Charles Wong



Frank Wong



Gina Fung Lin Wong



Jane Wong



Johnnie K. Wong



Lan Ying Wong



Margaret Ban "Pinkie" Wong



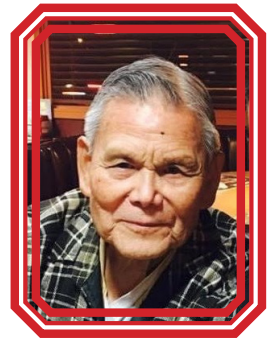
Mary Wong



Mary V. Wong



Mona Wong



Munn Y. Wong



Ora Lee Wong



Thomas K. Wong



Walter Wong



Danny Woon



Daisy Woon



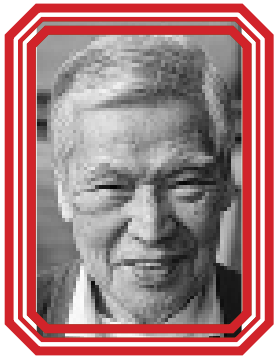
Ruth Yang



Harry Yee



Helen Yee



Ben Hat Kong Yeung



May Yeat Yeung



Violet Lee Yeung



Angela Yu



Wanda Zhang



Yuan Yuan Zhang

The Tucson Chinese Cultural Center respects all of our families and friends who have passed away before us.

Our history information that we have is very limited.

Please contact us to share your story about your family history and ancestry.



Evergreen Mortuary respectfully supports Chinese Qing Ming.

3015 North Oracle Road

Tucson, AZ 85705

(520) 257-4831

[www.evergreenmortuary-cemetery.com](http://www.evergreenmortuary-cemetery.com)